

# RAAJDHANI ENGINEERING COLLEGE

## Mandatory Disclosure

Mandatory Disclosure updated on 15<sup>th</sup> March

1. AICTE File No. F.No. 760-82 (NDEG)/ET/2006/N24

Date & Period of last 14.07.09

2. Name of the Institution **RAAJDHANI ENGINEERING COLLEGE**

Address of the Institution **Near Mancheswar Rly. Station.**

**Po.: Mancheswar Rly Colony**

**Mancheswar,**

**Dist.: Khurda (Orissa)**

### Location map of the Institution



City & Pin Code **751017**

State / UT **ORISSA**

Phone number with STD code **0674 – 2586240, 2586260**

FAX number with STD code **0674 – 2580317**

Office hours at the Institution **9AM TO 6PM (LUNCH BREAK 1 PM TO 2PM)**

Academic hours at the Institution **9am to 5pm.**

Email **rec\_bbsr@yahoo.co.in**

Website **www.rec.ac.in**

Nearest Railway Station (dist in Km) **Mancheswar, Bhubaneswar**

Nearest Airport (dist in Km) **About 2km.**

3. Type of Institution ~~Govt / Govt aided / University Dept / Deemed Univ /~~ **Private-Self Financed**

Category (1) of the Institution ~~Non Minority / Minority specify minority :~~

Category (2) of the Institution **Co-Ed / Women only**

4. Name of the organization running the Institution

**SAMRIDDI EDUCATIONAL TRUST**

Type of the organization **Society / Trust / PPP**

Address of the organization **4A, GIRNAR PALACE  
BOMIKHAL, CUTTACK ROAD  
BHUBANESWAR.**

Registered with **Trust Deed**

Registration date **16.12.2005**

5. Name of the affiliating University

**Biju Patnaik University of Technology (BPUT)**

Address **UGIE Campus, Jail Road, Rourkela, Orissa**

Website **www.bput.org**

Latest affiliation period **2010**

6. Name of Principal / Director **Prof. (Dr) Bimal Sarangi**  
Exact Designation **Principal**  
Phone number with STD code **0674 - 2586240**  
FAX number with STD code **0674 - 2580317**  
Email **bimal\_binit@yahoo.com**  
Highest Degree **Ph.D.**  
Field of specialization **Composite Materials**

## 7. Governing Board Members

Give details of all members with their educational qualifications and other credentials

- a) **C.A. B. Ramprasad**, B. Com. (H), FCA, FCS - **Chairman** of the Trust is an entrepreneur-cum-professional in the field of financial education and practice.
- b) **Shri. Manoj Kumar Palo**, B. Sc. and Social Worker - **Vice-Chairman** of the Trust is an educationist-cum-entrepreneur and actively involved in social service and social work in the underdeveloped districts i.e. KBK areas of the State.
- c) **Shri. Sarad Chandra Panda**, M. A., IRPM, LLB - **Secretary** of the Trust is an educationist and also an entrepreneur with flayer for social service in the field of education.

Frequency of meetings & date of last meeting

- a) The Board meeting takes place once in each quarter.
- b) Last meeting was held on 20.12.2009

## 8. Academic Advisory Body

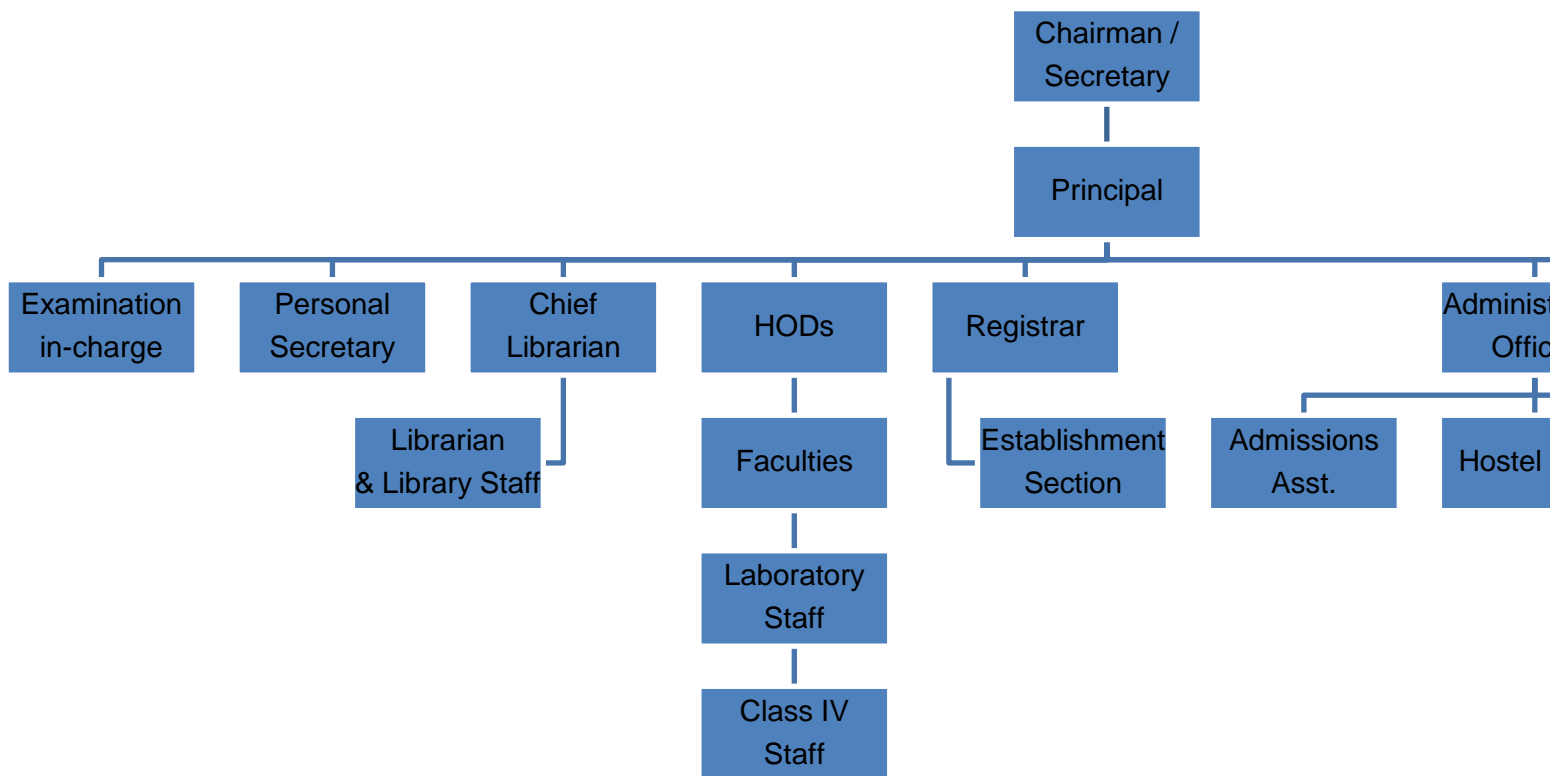
- a. CA. B. Ram Prasad, Chairman of the Trust.

- b. Sri. M.K.Palo, Vice-Chairman of the Trust.
- c. Sri. S.C.Panda, Secretary of the Trust.
- d. Sri. G.S.Mishra, Director of the Trust.
- e. Sri. Sabya Sachi Mishra, Managing Director of the Nayagarh Sugazr Complex .
- f. Sri. R.C.Sahoo, Professor Dept. of Electronics.
- g. Prof.( Dr.) B.Sarangi, Principal, Convener

### Frequency of meetings & date of last meeting

- a. The academic advisory body meets once in a year.
- b. Last meeting was held on 15.12.2009

## 9. Organizational Chart



**10. Student feedback mechanism on Institutional Governance/faculty performance**

- a) **Students feed-back are taken for the faculty effectiveness through a structured format twice in every semester for all discipline.**
- b) **The feed back from the students is shared with the faculty and action plan is drawn for improvement and self development.**

**11. Grievance redressal mechanism for faculty, staff and students**

**The grievance from the faculty staff and students is put up to the grievance redressal committee consisting of the following and decision is taken within 15 days.**

- a) **Secretary of the trust**
- b) **Director**
- c) **HOD**
- d) **Principal as Convener**

**12. Name of the Department**

**Computer Science & Engg.**

Course	<b>B.Tech</b>		
Level	<b>UG</b>	/	<b>PG</b>
1st Year of approval by the Council	<b>2006</b>		
	<b>2009-2010</b>	<b>2008-2009</b>	<b>2007-2008</b>
Year wise Sanctioned Intake	<b>90</b>	<b>90</b>	<b>90</b>
Year wise Actual Admissions	<b>90</b>	<b>90</b>	<b>90</b>
Cut off marks – General quota	<b>JEE 39898, AIEEE 499772</b>		
Students passed with Distinction	<b>1<sup>st</sup> batch will pass out on 2010</b>		
% Students passed with First Class	<b>-do-</b>		
Students Placed	<b>20</b>		
Average Pay package, Rs./Year	<b>2.2</b>		

Students opted for Higher Studies	27
Accreditation Status of the course	<del>Accredited / Provisionally Accredited / Not Accredited</del> / <b><u>Not eligible yet</u></b>
Doctoral Courses	Yes / No
Foreign Collaborations, if any	<b>No</b>
Professional Society Memberships	<b>1. Orissa Private Engineering College Association</b> <b>2. Orissa Management College Association</b>
Professional activities	
Consultancy activities	
Grants fetched	
Departmental Achievements	
Distinguished Alumni	

### **Electronics & Communication Engg**

Course	<b>B.Tech</b>		
Level	<b>UG</b>	/	PG
1st Year of approval by the Council	<b>2006</b>		
	<b>2009-2010</b>	<b>2008-2009</b>	<b>2007-2008</b>
Year wise Sanctioned Intake	<b>90</b>	<b>90</b>	<b>90</b>
Year wise Actual Admissions	<b>88</b>	<b>90</b>	<b>90</b>
Cut off marks – General quota	<b>JEE 23586, AIEEE 838618</b>		
Students passed with Distinction	<b>1<sup>st</sup> batch will pass out on 2010</b>		
% Students passed with First Class	<b>-do-</b>		
Students Placed	18		
Average Pay package, Rs./Year	2.1 Lakh.		
Students opted for Higher Studies	31		
Accreditation Status of the course	<del>Accredited / Provisionally Accredited / Not Accredited</del> / <b><u>Not eligible yet</u></b>		
Doctoral Courses	Yes	/	<b>No</b>
Foreign Collaborations, if any	<b>No</b>		

Professional Society Memberships

**1. Orissa Private Engineering College Association**

**2. Orissa Management College Association**

Professional activities

Consultancy activities

Grants fetched

Departmental Achievements

Distinguished Alumni

### **Electrical & Electronics Engineering**

Course

**B.Tech**

Level

**UG / ~~PG~~**

1st Year of approval by the Council

**2006**

**2009-2010    2008-2009    2007-2008**

Year wise Sanctioned Intake

**60                    60                    60**

Year wise Actual Admissions

**60                    60                    60**

Cut off marks – General quota

**JEE 23586, AIEEE 838618**

Students passed with Distinction

**1<sup>st</sup> batch will pass out on 2010**

% Students passed with First Class

**-do-**

Students Placed

22

Average Pay package, Rs./Year

2.3 Lakh

Students opted for Higher Studies

30

Accreditation Status of the course

~~Accredited / Provisionally Accredited / Not Accredited /~~ **Not eligible yet**

Doctoral Courses

Yes / **No**

Foreign Collaborations, if any

**No**

Professional Society Memberships

**1. Orissa Private Engineering College Association**

**2. Orissa Management College Association**

Professional activities

Consultancy activities

Grants fetched

Departmental Achievements

Distinguished Alumni



## Information Technology

Course	<b>B.Tech</b>		
Level	<b>UG</b>	/	<del>PG</del>
1st Year of approval by the Council	<b>2006</b>		
	<b>2009-2010</b>	<b>2008-2009</b>	<b>2007-2008</b>
Year wise Sanctioned Intake	<b>60</b>	<b>60</b>	<b>60</b>
Year wise Actual Admissions	<b>60</b>	<b>60</b>	<b>60</b>
Cut off marks – General quota	JEE 11236, AIEEE 838618		
Students passed with Distinction	<b>1<sup>st</sup> batch will pass out on 2010</b>		
% Students passed with First Class	<b>-do-</b>		
Students Placed	30		
Average Pay package, Rs./Year	1.8		
Students opted for Higher Studies	22		
Accreditation Status of the course	Accredited / Provisionally Accredited / Not Accredited / <b><u>Not eligible yet</u></b>		
Doctoral Courses	Yes	/	<b>No</b>
Foreign Collaborations, if any	<b>No</b>		
Professional Society Memberships	<b>1. Orissa Private Engineering College Association</b> <b>2. Orissa Management College Association</b>		
Professional activities			
Consultancy activities			
Grants fetched			
Departmental Achievements			
Distinguished Alumni			

## Mechanical Engineering

Course	<b>B.Tech</b>		
Level	<b>UG</b>	/	<del>PG</del>
1st Year of approval by the Council	<b>2006</b>		

	2009-2010	2008-2009	2007-2008
Year wise Sanctioned Intake	60	60	
Year wise Actual Admissions	60	60	
Cut off marks – General quota	JEE 12650, AIEEE 162053		
Students passed with Distinction	<b>1<sup>st</sup> batch will pass out on 2012</b>		
% Students passed with First Class	<b>-do-</b>		
Students Placed	1 <sup>st</sup> Batch taken admission on 2008		
Average Pay package, Rs./Year	NA		
Students opted for Higher Studies	NA		
Accreditation Status of the course	Accredited / Provisionally Accredited / Not Accredited / <b><u>Not eligible yet</u></b>		
Doctoral Courses	Yes	/	<b>No</b>
Foreign Collaborations, if any	<b>No</b>		
Professional Society Memberships	<b>1. Orissa Private Engineering College Association</b> <b>2. Orissa Management College Association</b>		
Professional activities			
Consultancy activities			
Grants fetched			
Departmental Achievements			
Distinguished Alumni			

### **Civil Engineering**

Course	B.Tech		
	UG	/	PG
Level			
1st Year of approval by the Council	<b>2006</b>		
	2009-2010	2008-2009	2007-2008
Year wise Sanctioned Intake	60		
Year wise Actual Admissions	60		
Cut off marks – General quota	JEE 20578, AIEEE 305184		
Students passed with Distinction	<b>1<sup>st</sup> batch will pass out on 2012</b>		
% Students passed with First Class	<b>-do-</b>		
Students Placed	1 <sup>st</sup> Batch taken admission on 2009		
Average Pay package, Rs./Year			

Students opted for Higher Studies	
Accreditation Status of the course	<del>Accredited / Provisionally Accredited / Not Accredited</del> / <b><u>Not eligible yet</u></b>
Doctoral Courses	Yes / No
Foreign Collaborations, if any	No
Professional Society Memberships	1. Orissa Private Engineering College Association 2. Orissa Management College Association
Professional activities	
Consultancy activities	
Grants fetched	
Departmental Achievements	
Distinguished Alumni	

## **MCA**

Course	<b>MCA</b>		
Level	<del>UG</del> / PG		
1st Year of approval by the Council	<b>2008</b>		
		<b>2009-2010</b>	<b>2008-2009</b> <b>2007-2008</b>
Year wise Sanctioned Intake	<b>60</b>		<b>60</b>
Year wise Actual Admissions	<b>10</b>		<b>60</b>
Cut off marks – General quota	4075		
Students passed with Distinction	<b>1<sup>st</sup> batch will pass out on 2010-2011</b>		
% Students passed with First Class		<b>-do-</b>	
Students Placed	1 <sup>st</sup> Batch taken admission on 2008		
Average Pay package, Rs./Year			
Students opted for Higher Studies			
Accreditation Status of the course	<del>Accredited / Provisionally Accredited / Not Accredited</del> / <b><u>Not eligible yet</u></b>		
Doctoral Courses	Yes / No		
Foreign Collaborations, if any	No		
Professional Society Memberships	1. Orissa Private Engineering College Association		

## 2. Orissa Management College Association

Professional activities  
Consultancy activities  
Grants fetched  
Departmental Achievements  
Distinguished Alumni

### **MBA**

Course	<b>MBA</b>		
Level	<del>UG</del>	/	<b>PG</b>
1st Year of approval by the Council	<b>2009</b>		
	<b>2009-2010</b>	<b>2008-2009</b>	<b>2007-2008</b>
Year wise Sanctioned Intake	<b>60</b>		
Year wise Actual Admissions	<b>35</b>		
Cut off marks – General quota	10208		
Students passed with Distinction	<b>1<sup>st</sup> batch will pass out on 2010-2011</b>		
% Students passed with First Class	<b>-do-</b>		
Students Placed	1 <sup>st</sup> Batch taken admission on 2009		
Average Pay package, Rs./Year			

Students opted for Higher Studies

Accreditation Status of the course

~~Accredited / Provisionally Accredited / Not~~

~~Accredited / Not eligible yet~~

Doctoral Courses

Yes

/

**No**

Foreign Collaborations, if any

**No**

Professional Society Memberships

**1. Orissa Private Engineering College  
Association**

**2. Orissa Management College  
Association**

Professional activities

Consultancy activities

Grants fetched

Departmental Achievements

Distinguished Alumni

<b>13. Name of Teaching Staff*</b>				Photo
Designation				
Department				
Date of Joining the Institution				
Qualifications with Class/Grade	UG	PG	PhD	
Total Experience in Years	Teaching	Industry		
Research				
Papers Published	National	International		
Papers Presented in Conferences	National	International		
PhD Guide? Give field & University	Field	University		
PhDs / Projects Guided	PhDs	Projects at Masters Level		
Books Published / IPRs/ Patents				
Professional Memberships				
Consultancy Activities				
Awards				
Grants fetched				
Interaction with Professional Institutions				

**14. Admission quota**

**70% ADMISSION OF TOTAL INTAKE THROUGH JEE, ODISHA**

Entrance test / admission criteria

**Joint Entrance Examination schedule will be notified in every year by Chairperson of JEE, Odisha, through the website [www.odishajee.com](http://www.odishajee.com) & after completion of Entrance Examination admission procedure will conduct as per merit basis.**

**YEAR                      2009-2010    2008-2009    2007-2008**

Cut off / last candidate admitted	39898	32245	40352
Fees in rupees	<b>Rs. 42000/=</b>		
Number of Fee Waivers offered	<b>As per BPUT guide lines students will eligible for waiver of Fees.</b>		
Admission Calendar			
PIO quota	Yes	/	No

### **15% ADMISSION OF TOTAL INTAKE THROUGH AIEEE**

Entrance test / admission criteria

**All India Engineering Entrance Examination schedule will be notified in every year by Chairperson of AIEEE, through the website [www.aieee.nic.in](http://www.aieee.nic.in) . After completion of the Entrance Examination admission procedure will conduct as per merit basis.**

	<b>YEAR</b>	<b>2009-2010</b>	<b>2008-2009</b>	<b>2007-2008</b>
Cut off / last candidate admitted		838618	845422	852236
Fees in rupees		Rs. 42000/=		
Number of Fee Waivers offered		<b>As per BPUT guide lines students will eligible for waiver of Fees.</b>		
Admission Calendar				
PIO quota		Yes	/	No

## 15% ADMISSION OF TOTAL INTAKE AT COLLEGE LEVEL AGAINST NRI QUOTA

Entrance test / admission criteria

**After publication of Rank list of JEE,Odisha, AIEEE, CAT&MAT, College receives the application from above rank holders for admission in different branches up to a cut off date. Then College prepares a merit list for admission.**

	YEAR	2009-2010	2008-2009	2007-2008
Cut off / last candidate admitted		21312	23458	24212
Fees in rupees		Rs. 42000/=		
Number of Fee Waivers offered		As per BPUT guide lines students will eligible for waiver of Fees.		
Admission Calendar				
PIO quota		Yes	/	No

### 15. Infrastructural information^

Classroom/Tutorial Room facilities			Photo
Class Room	30 nos each	70 sqm.	
Tutorial Room	12 nos each	70 sqm.	

Laboratory details Photo

**Chemistry Laboratory**  
**Physics Laboratory**  
**Communication Laboratory**  
**Network Device Laboratory**  
**Electrical Machine Laboratory**

**Analog Comm. Laboratory**

**C' Prog. Laboratory**



**C. Prog.**

**Civil Engg. Laboratory**

**Comm. Engg. Laboratory**

**Comm. Laboratory**

**Comm.System Laboratory**

**Comp.Center**

**Comp.Laboratory**

**Comp.Laboratory - MBA**

**Complier Design Laboratory**

**Computer Architecture & Org. Laboratory**

**Computer Architecture Laboratory**

**Computer Center - MBA**

**Computer Graphics Laboratory**

**Data Base Management Sys.**

**Data Base Management System**

**Data Structure Laboratory**

**Data Structure Laboratory for IT**

**Design & Analysis of Algorithm**

**Design & Analysis of Algorithm - CSE**

**Design & Simulation Laboratory**

**Digital Comm Laboratory**

**Digital Electronics Circuit Laboratory**

**Digital Signal Processing**

**Electrical Machine Laboratory**

**Energy Conversatin Device Laboratory**

**Heat Power Laboratory**

**Heat Transfer & Production**

**Hydraulic Machine & Production Laboratory**

**I. C Engine & Dynamics Laboratory**

**Internet & Web tech. for IT**

**Internet & web Tech**

**MP & MC Laboratory**

**Machine Dynamics & Hydrulic Machine**

**Material Testing Laboratory**

**Mechanical Engg Laboratory**

**Microprocessor & Microcontrol Laboratory**

**OOPS Laboratory**

**OOPS Laboratory - IT**

**Operating Sys Laboratory**

**Operating System Laboratory**

**P.D. Laboratory**

**Production Engg Laboratory**

**VLSI Laboratory**

**Workshop - 1**

**Workshop - 2**

**Power Electronics Laboratory**

**Basic Electrical Engineering Laboratory**

**Control & Instrumentation Laboratory**

**Electrical & Electronics Measurement Laboratory**

**Basic Electronics Laboratory**

**Analog Electronics Laboratory**

**Workshop**

**Mechanical Laboratory**

Computer Centre facilities

Photo

Computer Terminals

**565**

Internet

**10mbps BSNL lease lines**

Library facilities

Photo

**Total Library Space 800 Sqm.**

**Reading Room for 500 students**

**Total Number of Books 33877**

Auditorium / Seminar Halls / Amphi

Photo

**Two Seminar halls with OHP**

Cafeteria		Photo
	<p><b>One Cafeteria in a good &amp; lush green location</b>  <b>One Juice parlour of HPMC.</b></p>	
Indoor Sports facilities		Photo
	<p><b>Indoor Sports facility available.</b></p>	
Outdoor Sports facilities		Photo
	<p><b>One International standard Basket Ball court</b>  <b>One Tennis court.</b>  <b>One volley ball court</b>  <b>Open field for cricket, foot ball &amp; etc.</b>  <b>One Swimming Pool</b></p>	
Gymnasium facilities		Photo
	<p><b>One Gymnasium with all modern equipments</b></p>	
Facilities for disabled		Photo
Any other facilities		Photo
	<p><b>Canteen for students &amp; staff</b>  <b>Water coolers for drinking water</b></p> <p><b>In campus Hostels for Boys</b></p> <p><b>Hostels for Girls</b></p> <p><b>Separate canteen for Hostel students &amp; other students</b></p> <p><b>Own transport facility</b></p> <p><b>Training &amp; Placement cell</b></p>	
<b>16. Boys Hostel</b>		Photo
	<p>Two boys hostels for 400 Students</p>	
Girls Hostel		Photo
	<p><b>3 nos of Girls Hostel for 300 students</b></p>	
Medical & other Facilities at Hostel		Photo

**24hour medical Facilities**

**One Doctor - Dr. B.Swain**

**One Pharmacist - Mr.P.K.Rout**

**Essential Medicines**

**Ambulance Service for College students & Staff.**

**17. Academic Sessions**

Examination system, Year / Sem

**2 Semester in a Year**

Period of declaration of results

**As soon as possible by University**

**18. Counseling / Mentoring**

Career Counseling

**For career Counseling College Organizes:**

**EDP Cell**

**Training & Placement Cell.**

Medical facilities

**College has Medical Facilities with Doctor, Pharmacist, and Ambulance & Essential Medicines.**

Student Insurance

**As per Biju Patnaik University of Technology students are getting Insurance facilities.**

**19. Students Activity Body**

Cultural activities

**Annual cultural meet organized every year**

Sports activities

**Annual sports activities organized every year**

Literary activities                      **Annually organized**

Magazine / Newsletter                **One News letter “INNOVATOR”**

Technical activities / Tech Fest

**College Regularly Organizes:**

**Annual Tech Fest**

**Youth Science Congress**

**Seminars in Department wise**

Industrial Visits / Tours

**Regular Industrial visit / Tours are organizing from 3<sup>rd</sup> Semester onwards.**

Alumni activities

**After pass out of 1<sup>st</sup> Batch students steps will be taken for Alumni.**

**20. Name of the Information Officer for RTI**

G.S.Mishra

Designation

Director

Phone number with STD code

0674 - 2586260

FAX number with STD code

0674 - 2580317

Email

gsmrec@yahooo.com

